




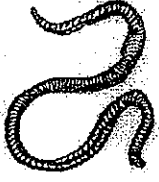



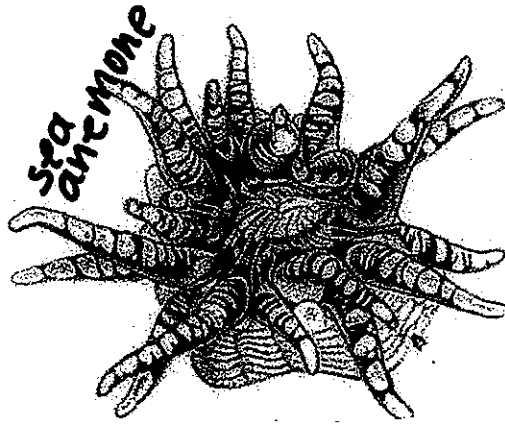


<p>Phylum Porifera</p> 	<p>Have water vascular systems</p>	<p>Phylum Platyhelminthes</p> 	<p>Have endoskeletons</p>	<p>Phylum Echniodermata</p> 
<p>Phylum Chordata</p> 	<p>Have soft bodies protected by hard shells</p>	<p>The simplest segmented animals</p>	<p>Often found in under cooked pork products</p>	<p>Have spiny skin</p>
<p>Were used by physicians to withdraw blood</p>	<p>Simplest animals to have a pseudocoelom and a complete digestive tract</p>	<p>Phylum Arthropoda</p> 	<p>Phylum Annelida</p> 	<p>Have dorsal, hollow nerve cords</p>
<p>Have pharyngeal slits</p>	<p>Have exoskeletons</p>	<p>Use a radula to eat food</p>	<p>The most numerous of all animals</p>	<p>Phylum Cnidaria</p> 
<p>Have stinging threads or tentacles</p>	<p>Have a post-anal tail</p>	<p>Resembles a sac perforated with holes</p>	<p>Phylum Mollusca</p> 	<p>Have notochords</p>
<p>Phylum Nemotoda</p> 	<p>Gastropods, bivalves, and cephalopods</p>	<p>Phylum to which humans belong</p>	<p>Jointed legs</p>	<p>Incomplete digestive tract, mouth and anus are the same</p>
<p>Are vertebrates</p>	<p>Body form can be a polyp or a medusa</p>	<p>Simplest animals with true coelems, and circulatory systems</p>	<p>The simplest bilateral animals</p>	<p>Have specialized cells but no tissues</p>



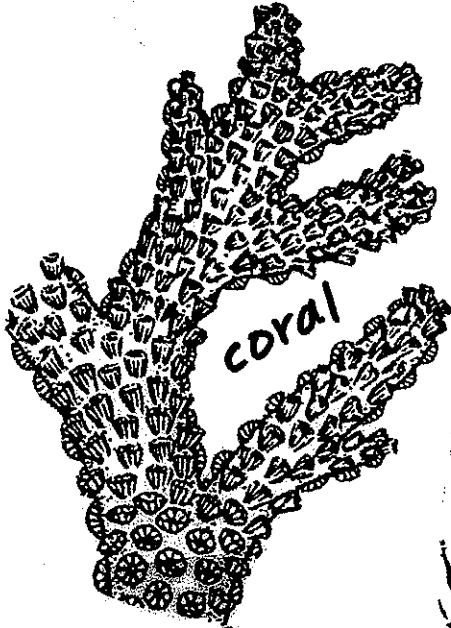
starfish



sea anemone



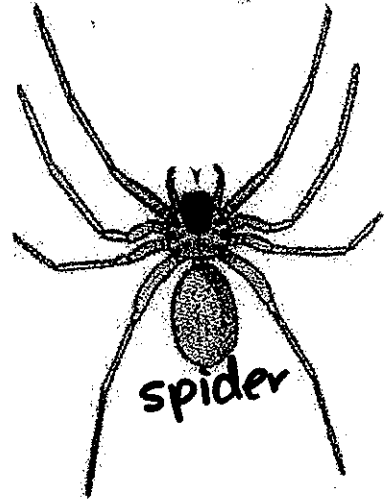
frog



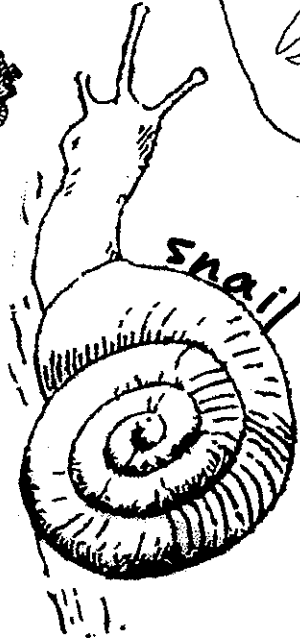
coral



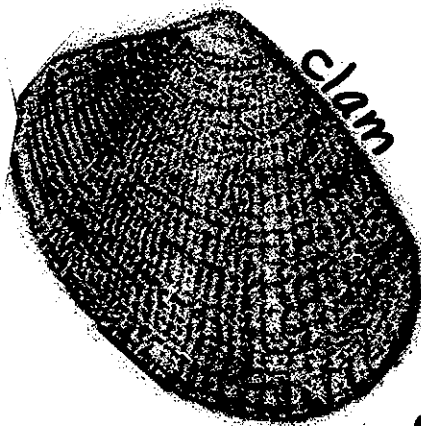
sand dollar



spider



snail



clam



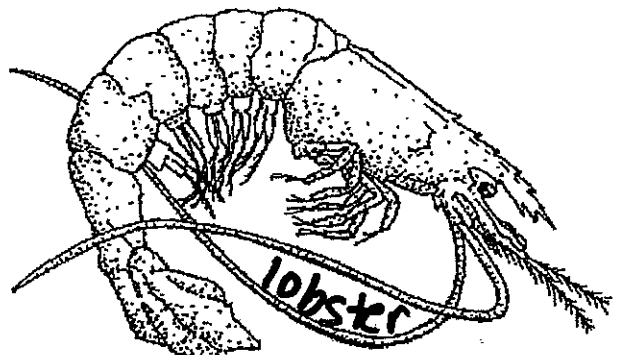
oyster



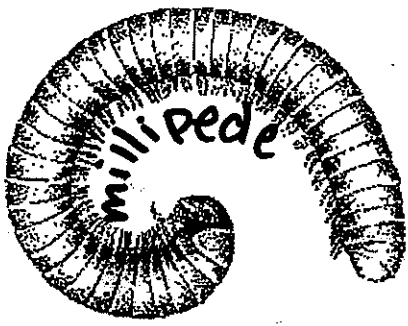
earthworm



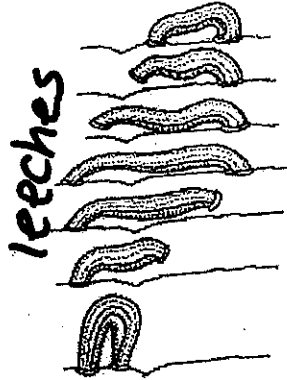
scorpion



lobster



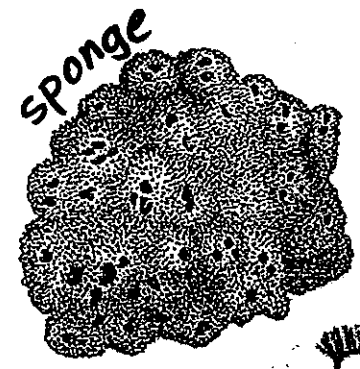
millipede



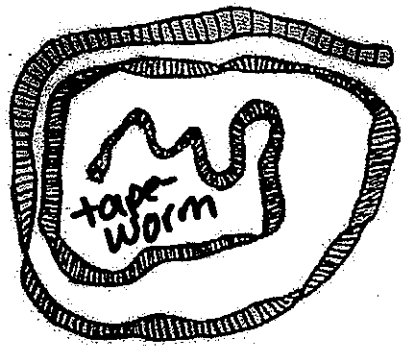
leeches



bird



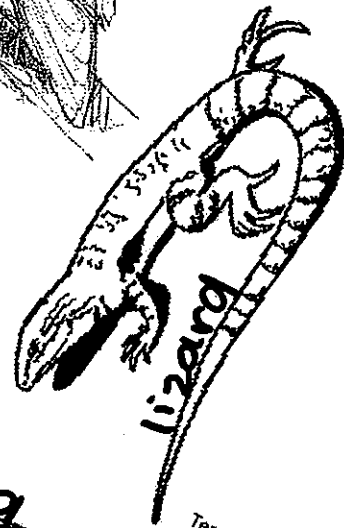
sponge



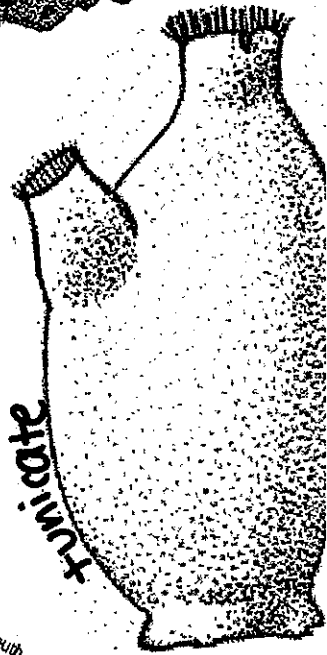
tapeworm



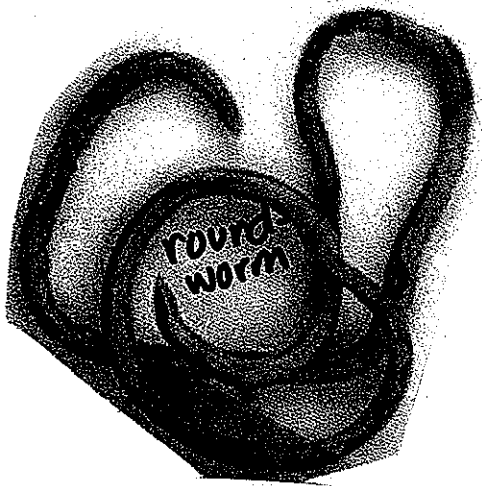
jellyfish



lizard



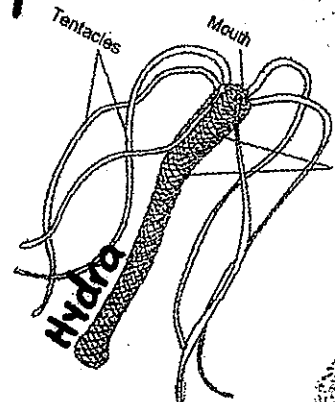
tunicate



round worm



zebra



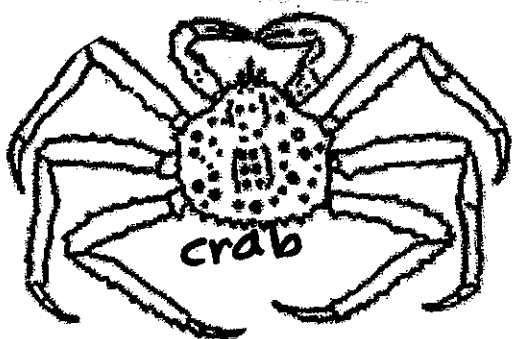
Tentacles

Mouth

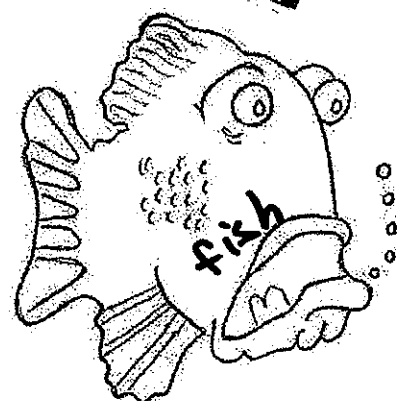
Hydra



slug



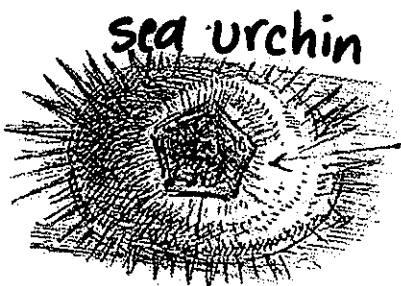
crab



fish



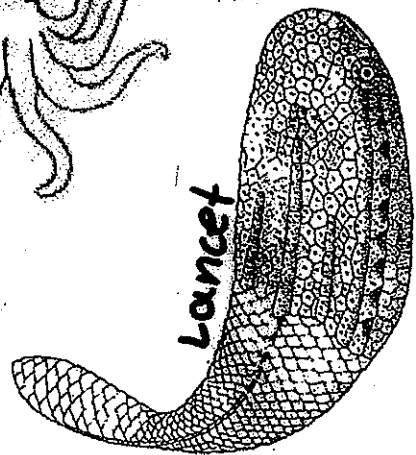
octopus



sea urchin



flat worm



lancelet